

FFRP PRESSURE PIPE REHABILITATION

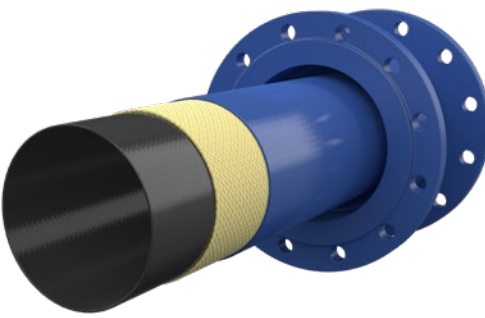
PRIMUS  **LINE**

SAFE.RELIABLE.SUSTAINABLE.

FLEXIBLE REHAB PIPE = LINER + CONNECTOR

TECHNICAL DETAILS

- Available in nominal diameters from 6 inches to 20 inches
- Maximum operating pressure depending on diameter: 1189 psi to 174 psi
- Design values for temperatures greater than 86 °F and, under certain conditions, up to 140 °F
- Design values for installation around multiple bends up to 90 degrees
- Friction coefficient: $k = 0.028 \text{ mm}$



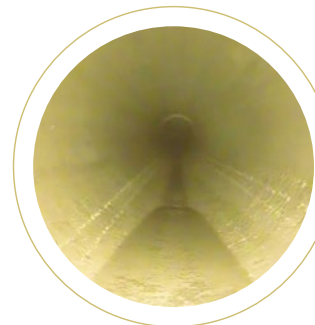
For operation in potable water lines, Primus Line® holds numerous additional certifications according to demanding international standards.



Certified to NSF/ANSI/CAN 61 & 372 + PFAS Tested

- AS/NZS 4020
- BS 6920
- SS375
- And many more

FIELDS OF APPLICATION



ASBESTOS
CEMENT WATER
MAINS



SEWER FORCE
MAINS



BRIDGE
PIPELINES



INNER CITY
PIPELINES



RIVER
CROSSINGS



TRAFFIC ROUTE
CROSSINGS



FIRE WATER
MAINS



INDUSTRIAL
HIGH-
PRESSURE
MAINS



VERTICAL
PIPELINES



TARGETED
CROSS-
SECTIONAL
REDUCTION

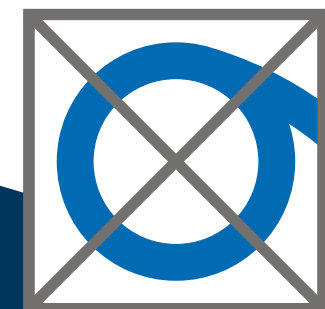


LINE
REDEDICATION



DUAL
CONTAINMENT

SPECIAL APPLICATIONS



HOST PIPE

START PIT

BENDS OF UP TO 90 DEGREES

UP TO 2,500 METRES / 8,200 FEET IN ONE STEP

DESTINATION PIT

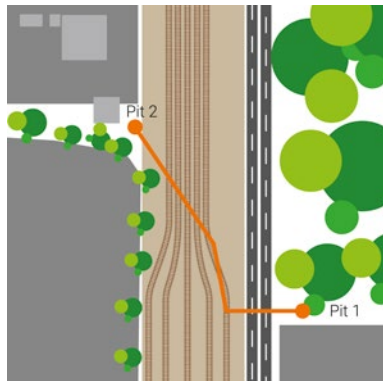
HOST PIPE



Learn how trenchless pipe rehabilitation works with Primus Line®:

<https://www.primusline.com/en-us/rehabilitation/installation-process>

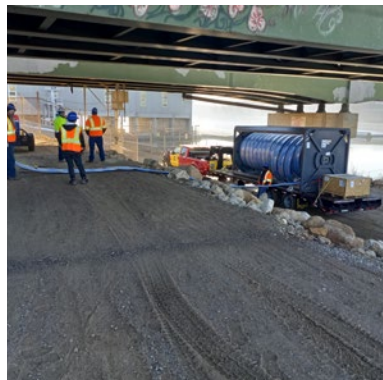
REFERENCES



HIGH PRESSURE PIPE WITH A 90 DEGREE BEND UNDER A RAIL-YARD TRACK

SEATTLE, WA

- Transported Medium: Potable water
- Host Pipe: CML 16" and 20"
- Operating Pressure: 250 PSI
- Primus Line® System: High Pressure 12" FFRP
- Total Length: 1785 LF
- Bends: One 90° and several 22° bends



WATER TRANSMISSION MAIN UNDERNEATH THE VERMONT STREET BRIDGE

LAWRENCE, KS

- Transported Medium: Potable water
- Host Pipe: Steel 20"
- Operating Pressure: 72 PSI
- Primus Line® System: Medium Pressure 20" FFRP
- Total Length: 1100 LF



ENVIROMENTALLY SENSITIVE AREA WITH LIMITED ACCESS

GRAND CANYON

- Transported Medium: Reclaimed water line
- Host Pipe: Ductile Iron
- Operating Pressure: 300 PSI
- Primus Line® System: Medium Pressure 6" and 8" FFRP
- Total Length: 6300LF (800 LF of 8" and 5500 LF or 8")



EMERGENCY REPAIR AND REHABILITATION

KEARNY, NJ

- Transported Medium: Potable water
- Host Pipe: Steel 16"
- Operating Pressure: 90 PSI
- Primus Line® System: Medium Pressure 10" FFRP
- Total Length: 2200 LF
- Bends: Two 45° bends



BRIDGE CROSSING WITH TEMPERATURES BETWEEN 21 °F AND 9 °F

SAINT PAUL, MN

- Transported Medium: Potable water
- Host Pipe: Cement-lined steel
- Operating Pressure: 85 PSI
- Primus Line® System: Medium Pressure 16" FFRP
- Total Length: 760 LF (510 LF + 250 LF)



Raedlinger Primus Line, Inc.
112 South Tryon Street, Suite 1130
Charlotte, NC 28284-2109
Phone: +1 704 5694460

www.primusline.com
info@primusline.com



North American Distribution Partner:

Manufactured Technologies Co., LLC
17988 Edison Avenue
Chesterfield, MO 63005
Phone: +1 815 587 2618

www.azuria.com/mtc
Rick Gage - rgage@aegion.com



01.07.2025 USA-CA