



PRESSURE PIPE REHABILITATION

PRIMUS  **LINE**

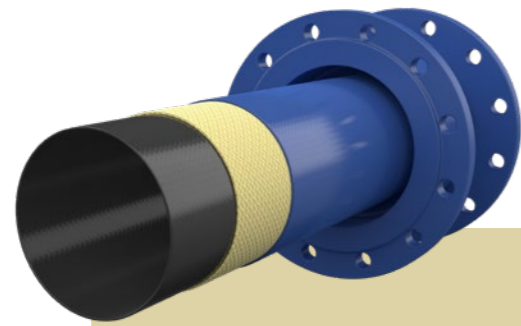
SAFE.RELIABLE.SUSTAINABLE.

FLEXIBLE REHAB PIPE = LINER + CONNECTOR

SUITED FOR THE FOLLOWING MEDIA

- Potable water
- Firefighting water
- Industrial water
- Sea water
- Process water
- Raw water
- Cooling water
- Residential wastewater
- Industrial wastewater
- Treated wastewater
- Brine

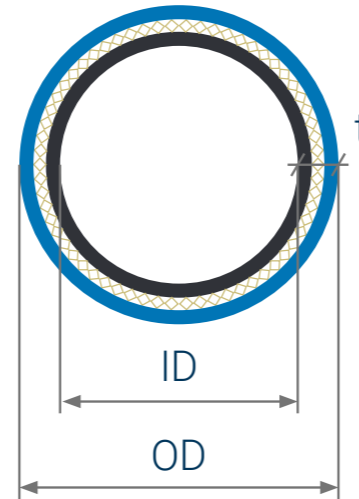
Other media only after detailed review and approval.



Test certificate pursuant to KTW-BWGL

For operation in potable water lines, Primus Line® holds numerous additional certifications according to demanding international standards.

- NSF/ANSI/CAN 61
- AS/NZS 4020
- BS 6920
- SS375
- And many more



Outer layer

- Media-specific based on: abrasion-resistant PE

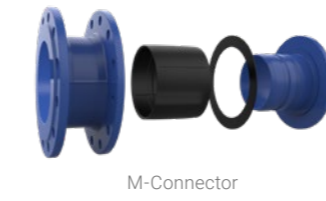
Reinforcement

- Seamless, woven fibre fabric
- Kevlar® or Kevlar®-polyester mix
- Single-layer or double-layer fabric design

Inner layer

- Media-specific based on: PE

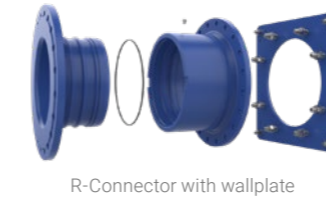
Various connectors available



M-Connector



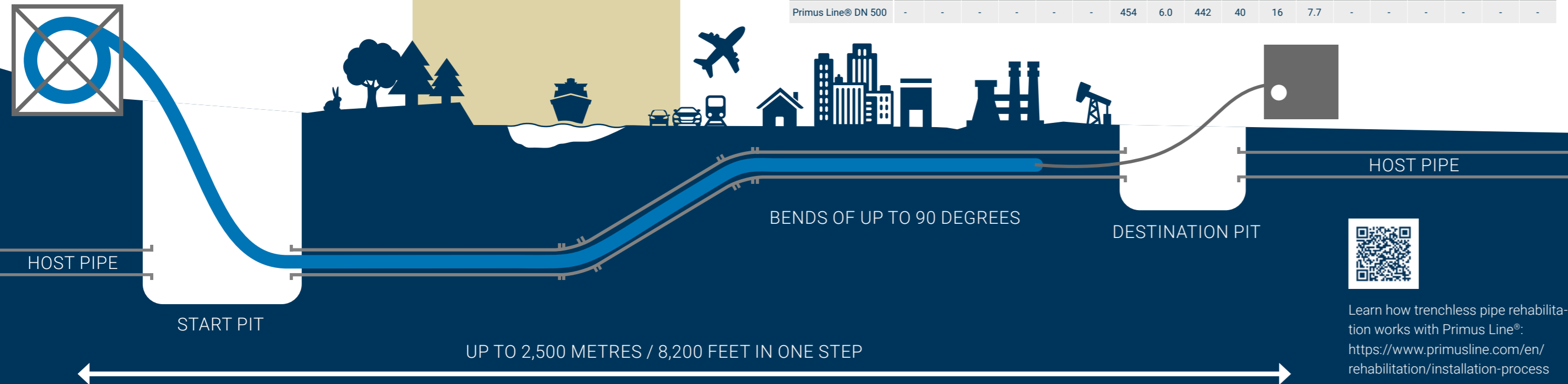
R-Connector



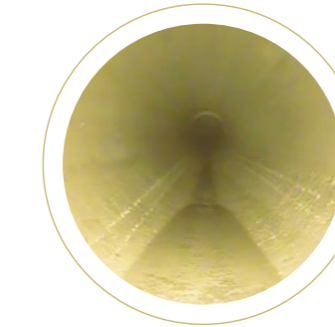
R-Connector with wallplate

PORTFOLIO W-LINER

METRIC	ED						MD						HD					
	single-layer hybrid design						single-layer aramid design						double-layer aramid design					
	OD	t	ID	burst	MOP	mass	OD	t	ID	burst	MOP	mass	OD	t	ID	burst	MOP	mass
	mm	mm	mm	bar	bar	kg/m	mm	mm	mm	bar	bar	kg/m	mm	mm	mm	bar	bar	kg/m
Primus Line® DN 150	132	6.0	120	40	16	2.2	134	6.0	122	140	56	2.2	-	-	-	-	-	-
Primus Line® SD 150	-	-	-	-	-	-	150	6.0	138	120	48	2.4	155	8.0	139	206	82	3.3
Primus Line® DN 200	182	6.0	170	40	16	3.1	183	6.0	171	100	40	3.0	187	8.0	171	173	69	4.0
Primus Line® SD 203	-	-	-	-	-	-	205	6.0	193	84	33	3.4	-	-	-	-	-	-
Primus Line® DN 250	237	6.0	225	40	16	4.0	237	6.0	225	75	30	4.0	241	8.0	225	128	51	5.3
Primus Line® SD 261	-	-	-	-	-	-	261	6.0	249	64	25	4.4	-	-	-	-	-	-
Primus Line® DN 300	286	6.0	274	40	16	4.8	284	6.0	272	64	25	4.8	288	8.0	272	110	44	6.4
Primus Line® DN 350	316	6.0	304	25	10	5.4	312	6.0	300	50	20	5.2	-	-	-	-	-	-
Primus Line® DN 400	354	6.0	342	25	10	6.2	354	6.0	342	46	18	6.0	357	8.0	341	82	32	8.1
Primus Line® DN 450	410	6.0	398	25	10	7.2	408	6.0	396	40	16	7.0	-	-	-	-	-	-
Primus Line® DN 500	-	-	-	-	-	-	454	6.0	442	40	16	7.7	-	-	-	-	-	-



FIELDS OF APPLICATION



ASBESTOS CEMENT WATER MAINS



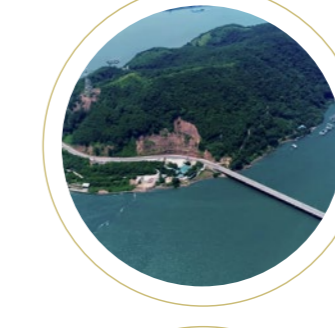
FIRE WATER MAINS



SEWER RISING MAINS



INDUSTRIAL HIGH-PRESSURE MAINS



BRIDGE PIPELINES



VERTICAL PIPELINES



INNER CITY PIPELINES



TARGETED CROSS-SECTIONAL REDUCTION



RIVER CROSSINGS



LINE REDEDICATION



TRAFFIC ROUTE CROSSINGS



DOUBLE CONTAINMENT

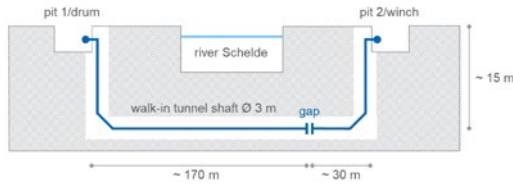
SPECIAL APPLICATIONS

REFERENCES



DN 600 WATER MAIN RENOVATION BENEATH THE RIVER SCHELDE

PORT OF ANTWERP, BELGIUM



Transported Medium: Potable water
 Host Pipe: DN 600 Butt-welded steel
 Operating Pressure: 6 bar
 Primus Line® System: Primus Line MD-500-W
 Total Length: 225 m
 Bends: 6 bends of 45° and 90°



EMERGENCY DN 150 PN 25 WATER SUPPLY AIRLIFTED AFTER STORM ALEX FLOODING

LE BORÉON, FRANCE

Transported Medium: Potable water
 Host Pipe: 120 m DN 150 in a PVC pipe stretching across the river Le Boréon
 Operating Pressure: 10 bar
 Primus Line® System: Primus Line ND-150-W
 Total Length: 1,340 metres including the riverbed crossing in a PVC pipe



PREVENTATIVE MAINTENANCE OF A DN 400 PN 16 STEEL WATER MAIN ON A BRIDGE

PASSAU, GERMANY

Transported Medium: Potable water
 Host Pipe: DN 400 Steel
 Operating Pressure: 6 bar
 Primus Line® System: Primus Line MD-400-W
 Total Length: 210 m



RENOVATION OF 2x2 PARALLEL SIPHONS WITH MULTIPLE BENDS UNDER THE VÁH RIVER

NITRA, SLOVAKIA

Transported Medium: Potable water
 Host Pipe: DN 500 Steel
 Operating Pressure: 6 bar
 Primus Line® System: Primus Line MD-500-W
 Total Length: 235 m
 Bends: 16 bends of 45 degrees each



REHABILITATION OF A 10 KM ASBESTOS CEMENT TRUNK WATER MAIN

REOCÍN, SPAIN

Transported Medium: Potable water
 Host Pipe: DN 250 Asbestos cement
 Operating Pressure: 7 bar
 Primus Line® System: Primus Line ND-250-W, Primus Line ND-200-W
 Total Length: 10,345 m



REHABILITATION OF TWIN SEWER RISING MAINS UNDER A BUSY DUAL CARRIAGEWAY

GREAT BRITAIN

Transported Medium: Residential waste water
 Host Pipe: DN 500 and DN 400 Cast Iron
 Operating Pressure: 8 bar
 Primus Line® System: Primus Line MD-500-W and Primus Line MD-400-W
 Total Length: Approx. 650m each



REHABILITATION OF A DN900 POTABLE WATER PIPELINE USING A 3-IN-1 PRIMUS LINE® SOLUTION

PALERMO, SICILY, ITALY

Transported Medium: Potable water
 Host Pipe: DN 900 Steel
 Operating Pressure: 30 bar
 Primus Line® System: Primus Line MD-250-W and Primus Line MD-300-W
 Total Length: 1,670 m total (640 m + 520 m + 510 m)



PRIMUS LINE

RÄDLINGER PRIMUS LINE GMBH
 Kammerdorfer Straße 16
 93413 Cham
 Germany

www.primusline.com
info@primusline.com

rädlinger
 WERNER RÄDLINGER GROUP



18.05.2026-GB EU